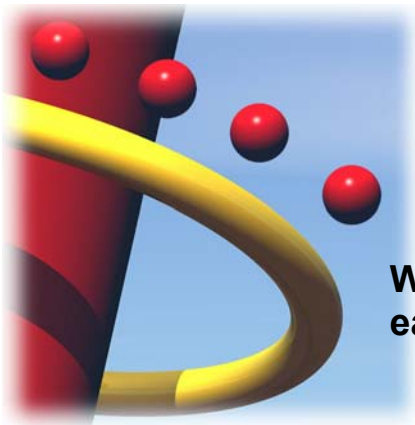


# MealTracker® Real-Time POS Management



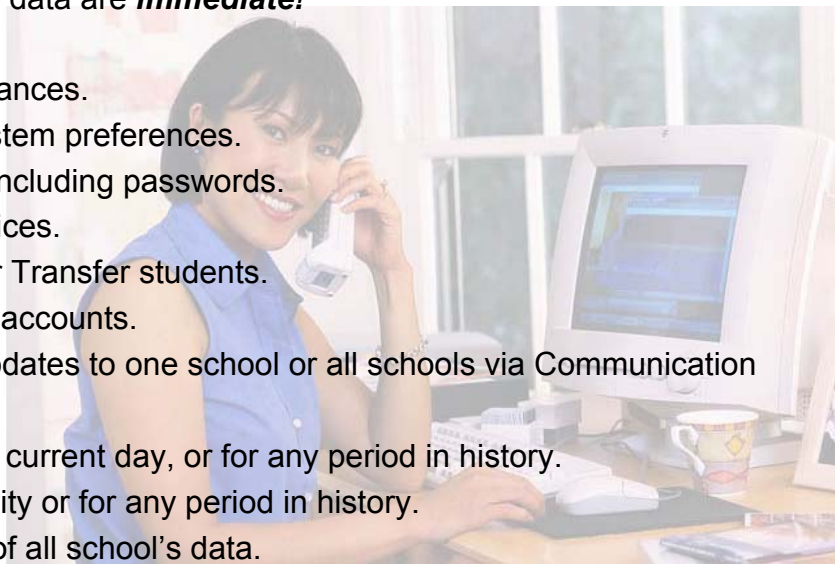
**Eliminates the need to visit school sites  
for routine tasks, saving you time and effort!**

**No need for schools to fax their reports to  
the district!**

**With Real-Time Management, district personnel control  
each school's POS computer just as if they are on-site!**

Make routine or urgent changes to school data from the comfort of your office. As the name implies, changes to any school's data are **immediate!**

- Credit accounts or adjust balances.
- Modify setup options and system preferences.
- Add or modify user profiles, including passwords.
- Change meal or a la carte prices.
- Add, Modify, Delete, Drop, or Transfer students.
- Change eligibility for student accounts.
- Send student eligibility file updates to one school or all schools via Communication Manager Module.
- View/print student activity for current day, or for any period in history.
- Print all reports for daily activity or for any period in history.
- Perform a complete backup of all school's data.
- Import accounts from district student database (SASI, Eagle, etc.).
- Import/export ASCII files for student data.
- Perform year-end maintenance procedures, including deleting and promoting student accounts.
- Enter enrollment and attendance data for any school.
- Send and receive messages between the district and any school site.
- Works with most popular types of networks.
- Windows 98, NT, 2000, ME, XP



**ACCU•SCAN**

Technology you need. Help you deserve.

**For more information:**

Toll-free 888-880-8278 x138 or 140  
sales@accu-scan.com